



Monthly Report

DeKalb Peachtree Airport Noise Information Office

September 2011

Prepared By:

Mario A. Evans

Airport Noise & Environmental Analyst

Date:

10/10/11

Introduction

The DeKalb-Peachtree Airport is located in a highly aircraft noise sensitive area surrounded by residential communities. The primary goal of the Good Neighbor Program is a community-based program aimed directly at the reduction of aircraft noise levels in the vicinity of the airport. The Good Neighbor Program is a multi-faceted program that uses many approaches toward the same goal.

PDK's Good Neighbor Program strives to reduce overall aircraft noise disturbances, by soliciting airport user involvement in reaching and maintaining this goal. Participation, knowledge, and cooperation are the keys to its success.

This report is a summary of airport operations, noise disturbances, follow-up letters, and overall comments for the month. For more information on PDK's Good Neighbor Program, contact the Noise Information Office at (770) 936-5442 or visit the airport's web-site at 'www.pdkairport.org'.

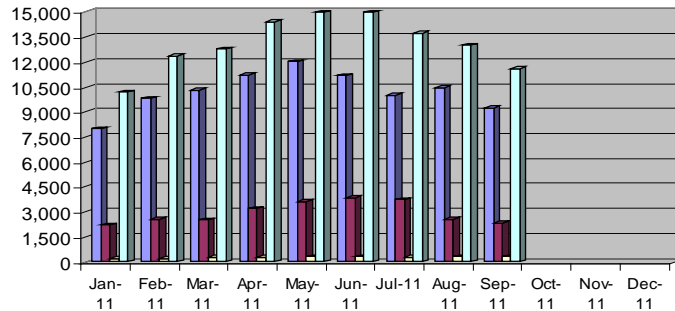
Aircraft Operations Summary

| | This Month | This Month Last Year | 5 Year Average for Month |
|--|------------|--|--------------------------|
| Total Operations | 11,609 | 13,828 | 15,376 |
| Itinerant | 9,272 | 10,947 | 10,993 |
| Local | 2,337 | 2,881 | 4,383 |
| Voluntary Curfew Ops | 302 | 292 | 285 |
| Prior Authorization (75,000 Pounds) | 32 | N/A noise disturbance calls associated with these flights. 2 voluntary curfew op was associated with these flights. | |

Definitions:

| | |
|---|---|
| Prior Authorization (Section 6-93 County Code) | Aircraft certified by the FAA with a max gross take-off weight greater than 75,000 pounds |
| Operation | One take-off or landing. Touch-and-go counts as two operations |
| Itinerant | Non touch-and-go operations |
| Local | Operations within 20 miles of Airport |
| Voluntary Curfew Ops | Operations that occur during the hours of 11:00 p.m. and 6:00 a.m. |

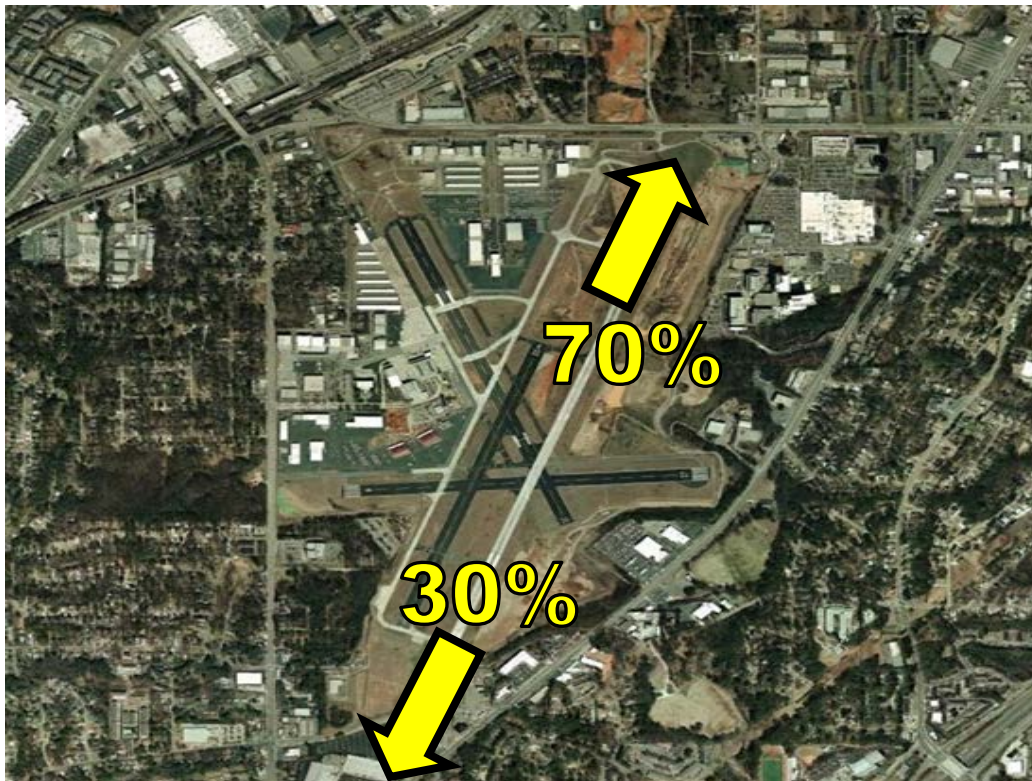
2011 Aircraft Operations Summary - By Type



| | JAN | FEB | MAR | APR | MAY | JUN | JUL | AUG | SEP | OCT | NOV | DEC |
|--------------------|--------|--------|--------|--------|--------|--------|--------|--------|--------|-----|-----|-----|
| ■ Interant | 8,010 | 9,829 | 10,296 | 11,243 | 12,032 | 11,202 | 10,004 | 10,463 | 9,272 | | | |
| ■ Local | 2,199 | 2,548 | 2,504 | 3,205 | 3,632 | 3,868 | 3,742 | 2,563 | 2,337 | | | |
| □ Voluntary Curfew | 201 | 208 | 255 | 270 | 323 | 304 | 268 | 302 | 302 | | | |
| □ Total Operations | 10,209 | 12,377 | 12,800 | 14,448 | 15,664 | 15,070 | 13,746 | 13,026 | 11,609 | | | |

Runway Mode of Operations

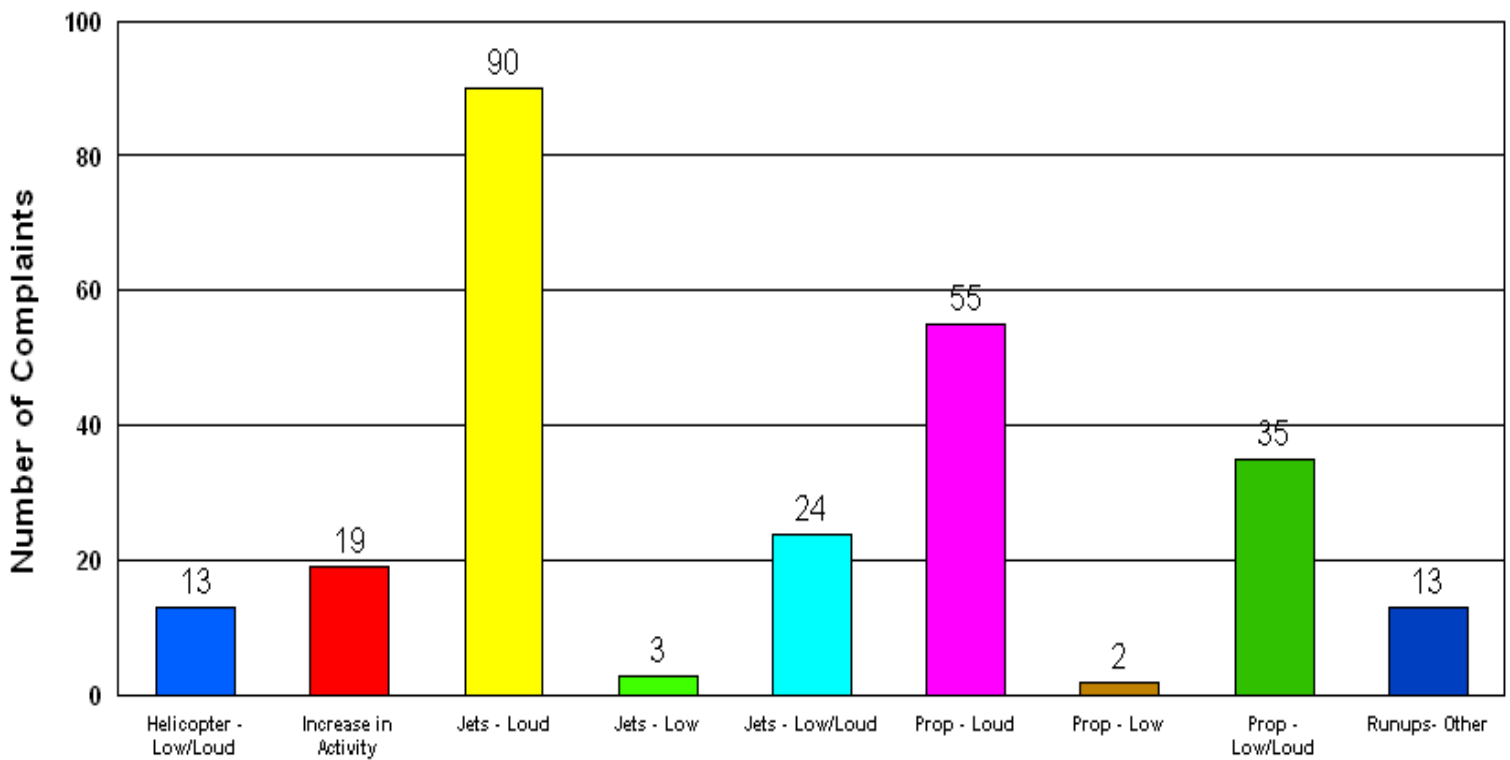
Directional use of runways has a major effect on flight patterns and the areas affected by these flight operations. Weather and wind direction generally determines runway selection. When the tower is open the FAA Air Traffic Control Tower determines directional use of runways.



Noise Disturbances Reported

PDK maintains a hotline that permits residents to report unusually loud aircraft over-flights.

| Total complaints for the month | Monthly Complaint Average 2011 | Reports per Household <i>(minus top two/Households)</i> | Reports per Household <i>All Inclusive</i> |
|--------------------------------|--------------------------------|--|---|
| 254 | 145.9 | 3.0 | 9.4 |

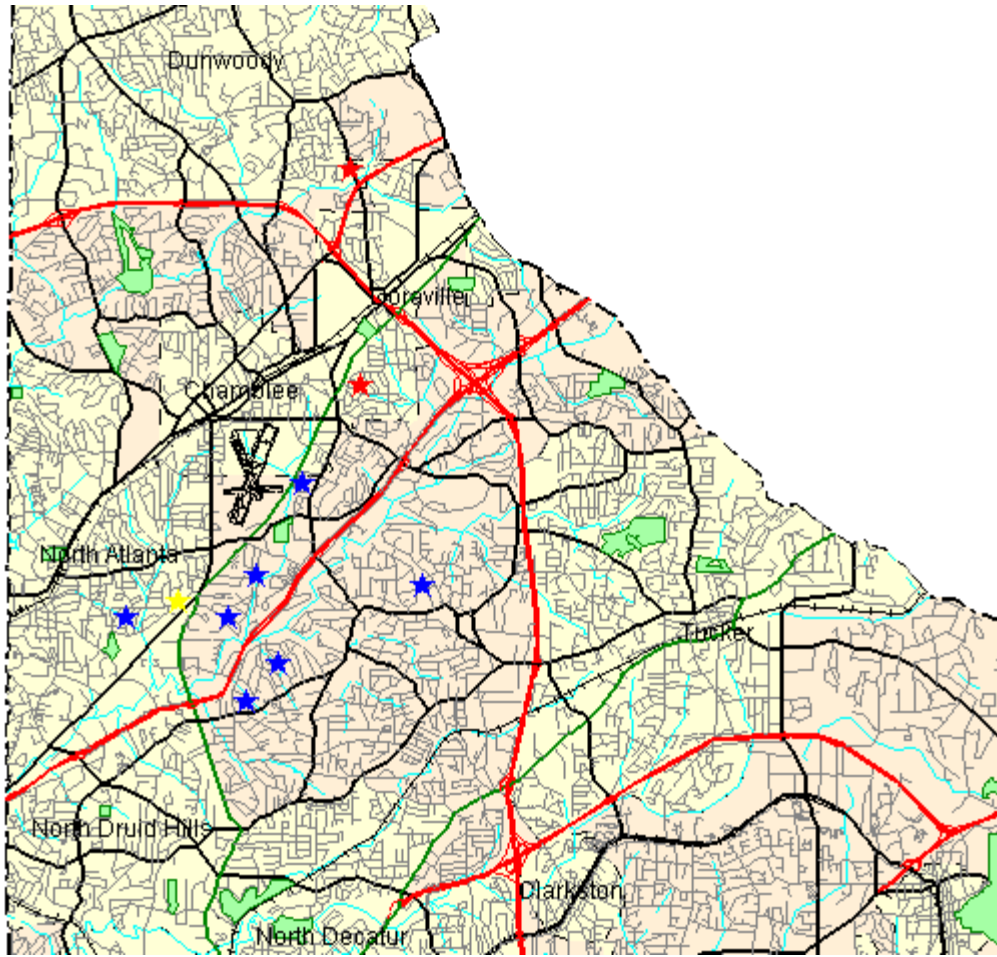


Complainants

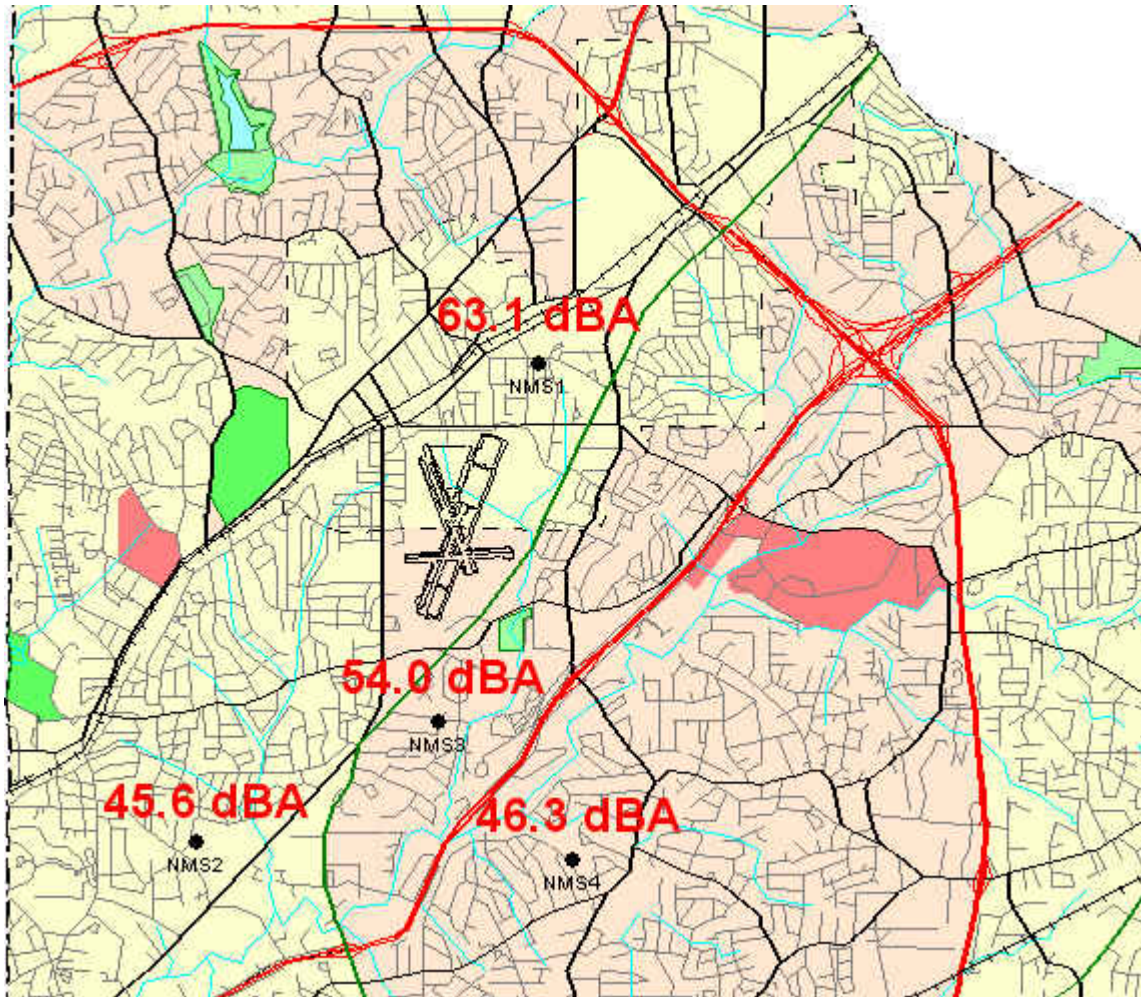
| | | |
|------------------|--|-----|
| Burgess | 3270 Bradley Drive, Chamblee 30341 | 1 |
| Moss | 2538 Chestnut Landing, Atlanta 30360 | 32 |
| Trinkle | 2712 Drew Valley Road, Atlanta | 1 |
| Trinkle | 2712 Drew Valley Road, Atlanta | 6 |
| Moss | 2538 Chestnut Landing, Atlanta 30360 | 55 |
| Frierson | 2928 Sylvan Ramble Road, Atlanta | 1 |
| Pegetson | 2886 Redding Road, Atlanta | 1 |
| Brethour-Diamond | 1978 N Ridgeway Road NE, ATLANTA 30345 | 3 |
| Link | 2361 Ewing Dr, Atlanta 30319 | 3 |
| Gill | 2687 Fairlane Drive, Chamblee | 1 |
| Rufulo | 1896 9 th Street, Atlanta | 4 |
| Snyder | 3436 Allison Dr, Doraville 30340 | 123 |
| Silver | 2108 Meadowcliff Drive, Atlanta 30345 | 2 |
| Khan | 2270 Tanglewood Circle | 2 |
| Bonser | 4865 Adams Walk, Dunwoody 30338 | 1 |
| Anonymous Caller | | 1 |
| Marshall | 2559 Woodacres Road, Atlanta 30345 | 1 |
| Chamas | 1626 Chateau Drive, Dunwoody 30338 | 3 |
| Allen | 1532 Brockland Court | 2 |
| Sully | 1143 Lynmore Drive, Atlanta | 1 |
| Shannon | 2516 Warwick Circle, Atlanta 30345 | 3 |
| Pitman | City Hall, Doraville | 1 |
| Kwatinetz | 1231 Ivybrook Lane, Atlanta 30319 | 1 |
| Freidman | 2452 McClaren Circle | 1 |
| Gravit | 2027 Clairmont Ter NE, Atlanta 30345 | 1 |
| Whitfield | 2993 Villa Eata Drive, Chamblee 30341 | 1 |
| Nickels | 2270 Tanglewood Circle 30345 | 2 |

Number of Complaints: 254
 Number of Complainants: 27

Disturbance Location Pin Map



Monthly Noise Levels at Monitors



Noise Terminology

- *Decibels (dB) are the unit of measurement on the loudness scale. Decibels that a human can hear are called “A-weighted” or “dBA” on the sound frequency scale.*
- *The decibel scale is logarithmic, not linear. The smallest detectable change 1 dB; 3 dB for a human is readily detectable; 10 dB seems twice as loud.*
- *Lmax – The maximum A-weighted sound level for a given event – the highest level registered on the scale or meter; is not related to the duration for the event.*
- *DNL – A 24-hour time-averaged sound exposure level. It is the noise metric of choice in aircraft sound level measurement. It is also used to define noise contours of equal exposure. All Federal agencies have adopted DNL (LDNA) as the metric for airport noise analysis. (Day Night Level) (Day Night Level A-weighted)*
- *Leq – The steady A-weighted sound level over any specified period. It is used to identify the average sound level over a given period of time.*

Letters

Voluntary Curfew Operations & Operators

Operations:

The airport identified a total 301 of the 302 operations during the voluntary curfew period (11PM-6AM) during the month of September, 2011. 52 of these 302 operations were identified as MEDEVAC and/or emergency flights.

90 "one time" operations were conducted during this period.

208 were multi-time operations conducted during this period, i.e. an operator conducting 2 or more operations during this period.

Operators Identified / Multi-Use:

137 operators were identified using the airport during the voluntary curfew period.

47 operators were identified using the airport during the voluntary curfew period for 2 or more times during the month.

8 operators were identified as MEDEVAC and/or emergency flights.

Complaints received from operations conducted during the voluntary curfew period:

254 complaints were received during September, 2011.

7 complaints were received for operations conducted during the voluntary curfew period.

This Month (N #'s)

29 Aircraft with 2 operations (525, 93028, 10UP, 141RD, 1648X, 173KR, 220SG, 235EA, 34LT, 354EF, **3589X**, 401BL, 4093Y, 4188S, **42HN**, 435QS, 522DJ, **55FN**, 600CL, 608CT, 615HB, 62LM, 7151W, 724EH, 72EP, 769XJ, 781CK, 81FH,955AF)

2 Aircraft with 3 Operations (5387G, 60PC)

5 Aircraft with 4 Operations (178AF, 31NW, 4093W, 841TF, 89TC)

2 Aircraft with 6 Operations (377P, **4083Y**)

2 Aircraft with 7 Operations (**350PC**, 763DB)

1 Aircraft with 8 Operations (333VS)

1 Aircraft with 9 Operations (**117CH**)

1 Aircraft with 10 Operations (**8HQ**)

1 Aircraft with 12 Operations (9539F)

1 Aircraft with 14 Operations (**101TT**)

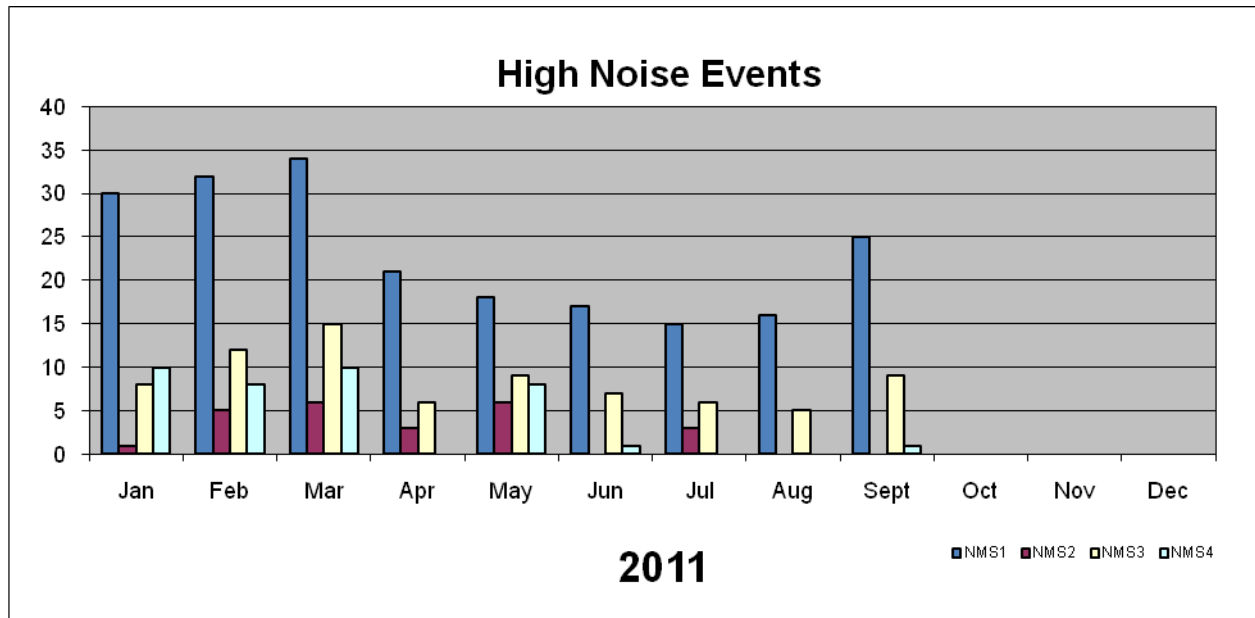
1 Aircraft with 16 Operations (208LS)

1 Aircraft with 29 Operations (9514F)

***Note: The bold face N#'s represent MEDEVAC, Medical related flights, or Law Enforcement.**

High Noise Event Threshold

The high noise event threshold was developed to work with pilots in methods and techniques that could reduce aircraft noise levels in and around PDK and its residential areas. Noise Monitoring Station (NMS) 1 is located in a commercial district and is set at **93 dBA Lmax** or greater. All other monitors, NMS2, 3, & 4 are located in residential areas and are set at **90 dBA Lmax** or greater. A total of 21 advisory letters were sent this month for aircraft identified as exceeding PDK's high noise event threshold.



August (N #'s)

8 Aircraft with 1 High Noise Events (114SP, 124EP, 294RT, 601HW, 800QC, 900JB, TWY42)

1 Aircraft with 3 High Noise Events (111FA)

1 Aircraft with 4 High Noise Events (125JW)

September (N #'s)

20 Aircraft with 1 High Noise Events (400GJ, 87DY, 500GF, 450WB, 186XL, 823PM, 253DS, 111FA, 114SN, 213BA, 416WM, 467AM, 499PA, 500JW, 500TH, 523AM, 550RM, 598GS, 733G, 900JB)

4 Aircraft with 2 High Noise Events (301MT, 30WR, 428JD, 330WR)

1 Aircraft with 6 High Noise Events (125JW)

Comments

Please visit www.pdkairport.org for all your airport information or you may contact the airport about noise concerns at pdknoise@co.dekalb.ga.us . Also follow us on facebook at

<http://www.facebook.com/pages/PDK-DeKalb-Peachtree-Airport/205886864195>