



---

# Monthly Report

---

## **DeKalb Peachtree Airport Noise Information Office**

### **March 2012**

Prepared By:

John D. Carroll

Airport Noise & Environmental Technician

Date:

4/05/2012

# Introduction

The DeKalb-Peachtree Airport is located in a highly aircraft noise sensitive area surrounded by residential communities. The primary goal of the Good Neighbor Program is a community-based program aimed directly at the reduction of aircraft noise levels in the vicinity of the airport. The Good Neighbor Program is a multi-faceted program that uses many approaches toward the same goal.

PDK's Good Neighbor Program strives to reduce overall aircraft noise disturbances, by soliciting airport user involvement in reaching and maintaining this goal. Participation, knowledge, and cooperation are the keys to its success.

This report is a summary of airport operations, noise disturbances, follow-up letters, and overall comments for the month. For more information on PDK's Good Neighbor Program, contact the Noise Information Office at (770) 936-5442 or visit the airport's web-site at 'www.pdkairport.org'.

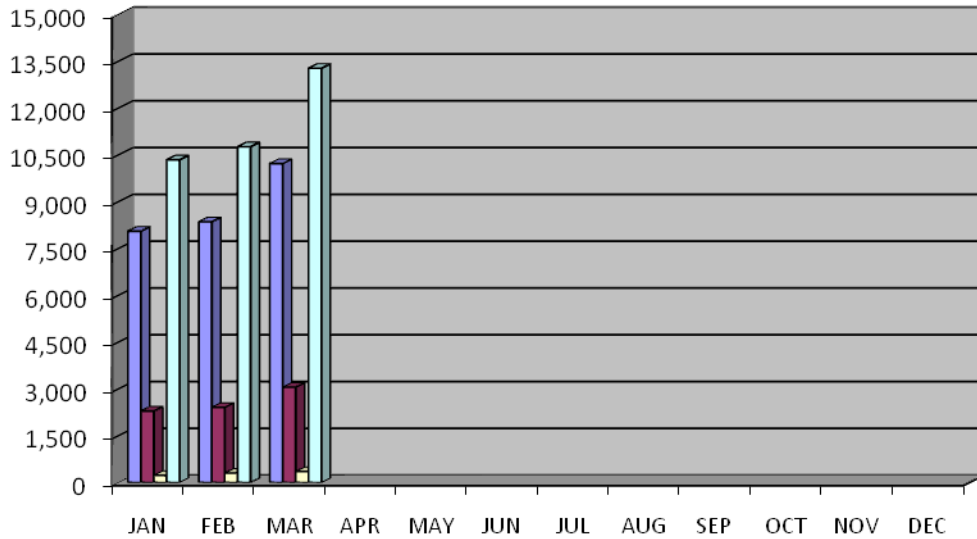
## Aircraft Operations Summary

	This Month	This Month Last Year	5 Year Average for Month
Total Operations	13,276	12,800	13,836
Itinerant	10,222	10,296	10,580
Local	3,054	2,504	3,526
Voluntary Curfew Ops	350	255	279
Prior Authorization (75,000 Pounds)	64	3 noise disturbance calls associated with these flights. 1 voluntary curfew ops were associated with these flights.	

### Definitions:

<b>Prior Authorization (Section 6-93 County Code)</b>	Aircraft certified by the FAA with a max gross take-off weight greater than 75,000 pounds
<b>Operation</b>	One take-off or landing. Touch-and-go counts as two operations
<b>Itinerant</b>	Non touch-and-go operations
<b>Local</b>	Operations within 20 miles of Airport
<b>Voluntary Curfew Ops</b>	Operations that occur during the hours of 11:00 p.m. and 6:00 a.m.

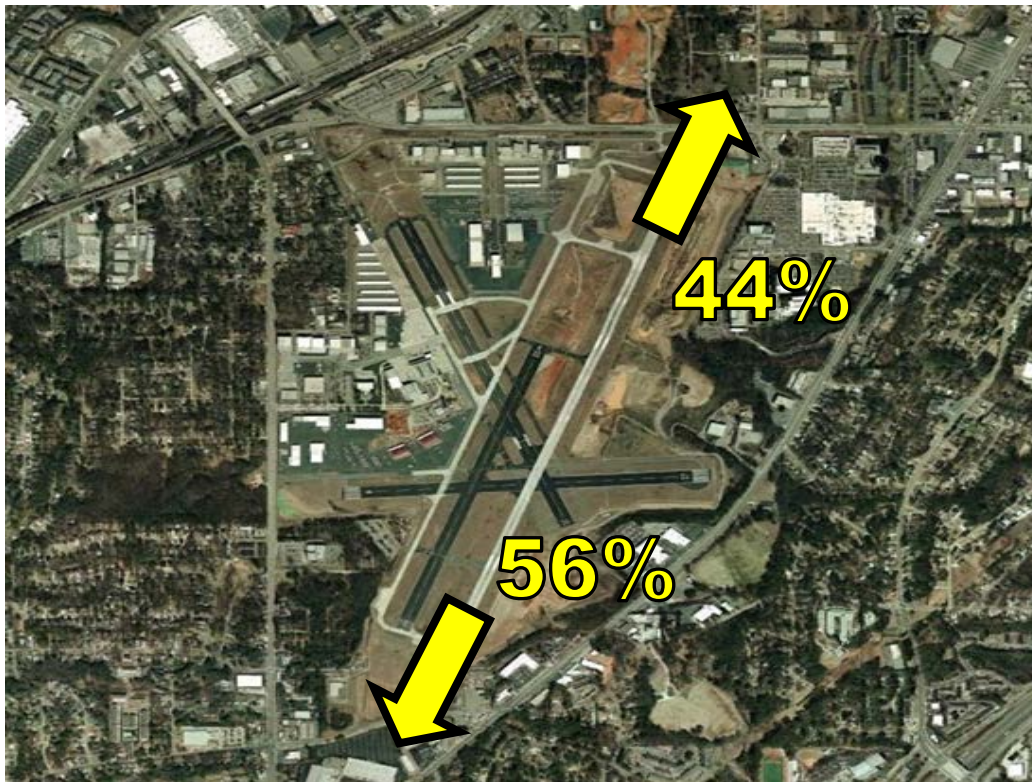
## 2012 Aircraft Operations Summary - By Type



	JAN	FEB	MAR	APR	MAY	JUN	JUL	AUG	SEP	OCT	NOV	DEC
Itinerant	8,054	8,358	10,222									
Local	2,290	2,405	3,054									
Voluntary Curfew	226	301	350									
Total Operations	10,344	10,763	13,276									

## Runway Mode of Operations

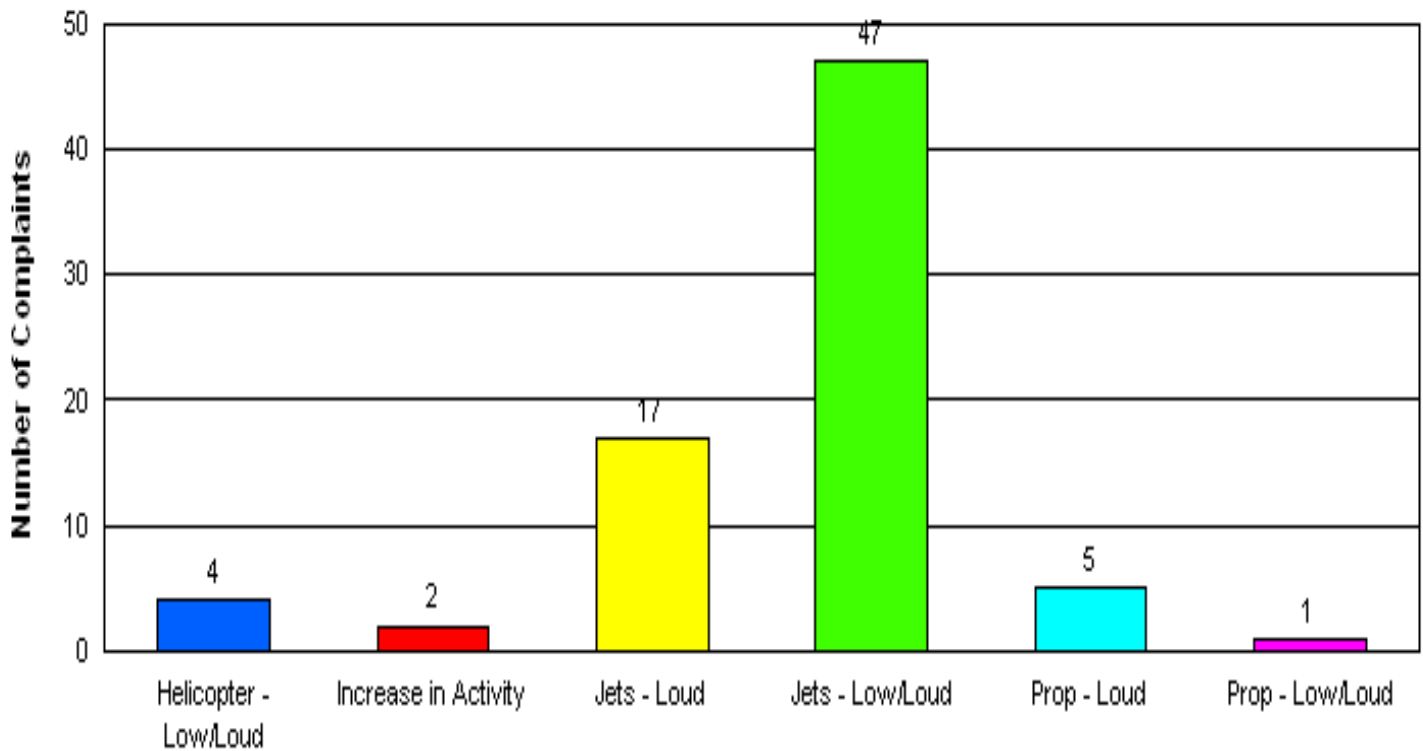
Directional use of runways has a major effect on flight patterns and the areas affected by these flight operations. Weather and wind direction generally determines runway selection. When the tower is open the FAA Air Traffic Control Tower determines directional use of runways.



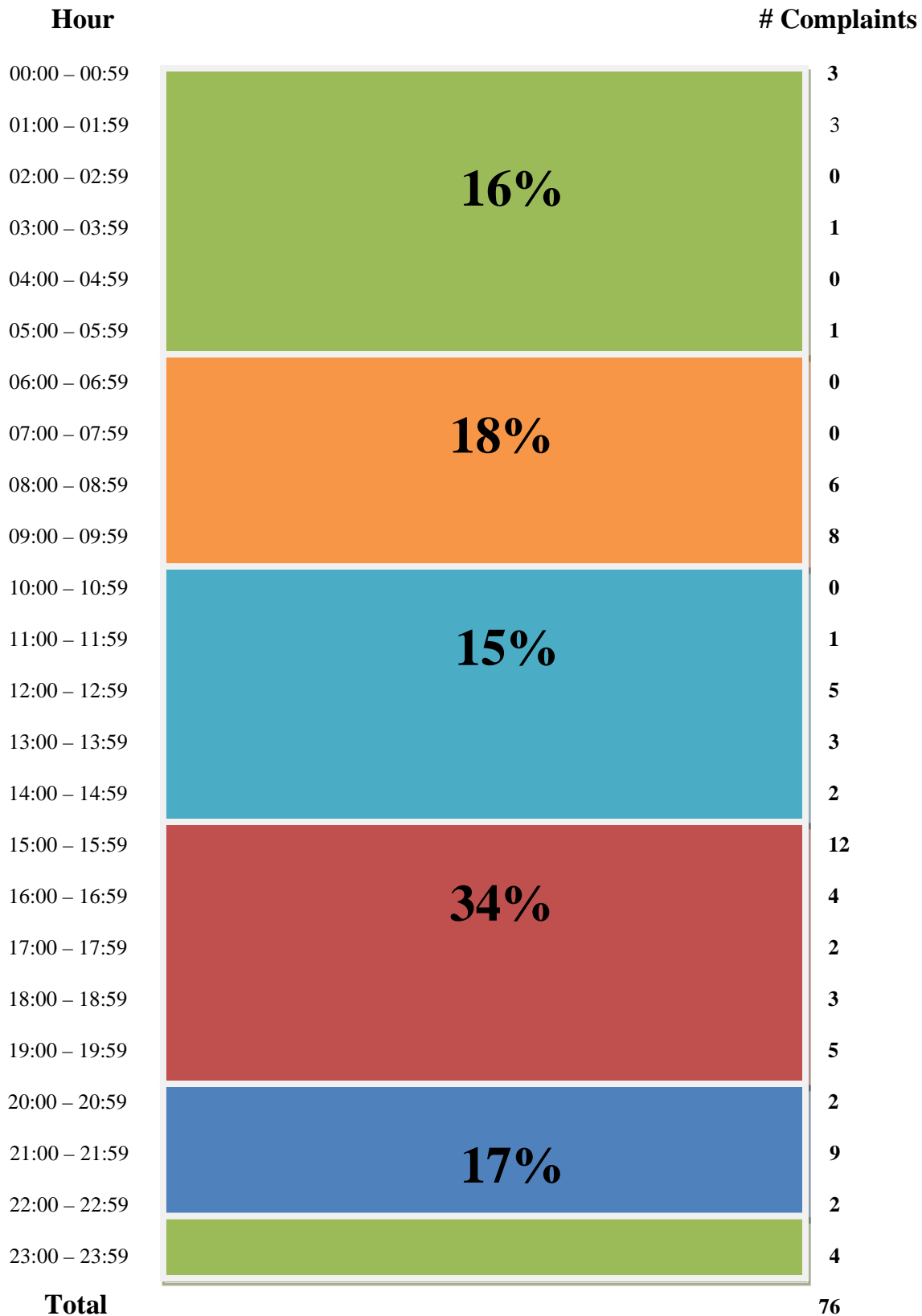
# Noise Disturbances Reported

PDK maintains a hotline that permits residents to report unusually loud aircraft over-flights. (770) 936-5442

Total complaints for the month	Monthly Complaint Average 2012	Reports per Household <i>(minus top two/Households)</i>	Reports per Household <i>All Inclusive</i>
76	58	1.9	2.8



# Complaints by Hour



## Complainants

Singer	1458 Conasauga Ave, Atlanta 30319	1
Anonymous	Unknown	3
Marshall	2559 Woodacres Road, Atlanta 30345	1
Cox	3044 Lanier Drive, Atlanta 30319	1
Busby	1117 James Town Road, Decatur 30033	1
Nelson	2702 Townley Circle, Doraville 30340	4
Resnick	2674 Addison Drive, Doraville 30340	1
Carlson	2370 Trail Drive, Chamblee 30341	1
Colton	2370 Row Drive, Chamblee 30341	1
Laszlo	2926 Cravey Trial, Atlanta 30345	1
F. Moss	2538 Chechnut Landing, Atlanta 30360	6
Hines	2276 Tangle Woods Drive, Dunwoody 30338	1
J. Moss	2538 Chechnut Landing, Atlanta 30360	3
Morman	4578 Armley Point, Norcross 30092	23
Substel	2678 Code Circle, Atlanta 30319	1
Langford	2075 Clairmeads Valley Road, Atlanta 30329	1
Jacobson	2886 Redding Road, Atlanta 30319	1
Shannon	2516 Warwick Circle, Atlanta	2
Smith	2459 Fair Oaks Road, Decatur 30033	1
Henson	Kings Down Circle, Dunwoody 30338	1
Link	2361 Ewing Drive, Atlanta 30319	3
Hull	4780 Gaidrew Court, John Creek 30022	2
Whitfield	2993 Villa Esta Drive, Chamblee 30341	1
Snyder	3436 Allsion Drive, Doraville 30340	4
Ziler	1830 Tobey Road, Atlanta 30341	2
Silver	2108 Meadowcliff Drive, Atlanta 30345	4
Younger	2030 Lenox Cove Circle NE, Atlanta 30319	5

Number of Complaints: 76

Number of Complainants: 27


## **Correlation of noise complaints to operations (NOMS)**

Name	Offense Start	Flight Time	Rwy	Op	Equip	Flight ID	NMS	Lmax
Morman	03-01-2012 21:56	03-01-2012 22:02:22	20L	A	GLEK	PRMLJ	NMS1	82.1
Link	03-02-2012 15:28	03-02-2012 15:29:01	20L	D	GLF3	N523AM	NMS2	86.6
							NMS3	90.5
Younger	03-03-2012 08:13	03-03-2012 08:13:15	20L	D	C56X	N905AC	NMS3	77.6
							NMS4	69.8
Younger	03-04-2012 05:24	UNKN						
Ziler	03-04-2012 13:00	UNKN						
Jacobson	03-04-2012 14:00	03-04-2012 14:00:24	UNK	A	UNKN	UNKN		
Morman	03-04-2012 19:44	03-04-2012 19:47:25	20L	A	CL60	N392JT	NMS1	80.8
F Moss	03-05-2012 13:03	03-05-2012 12:54:31	02R	D	LJ45	N451N	NMS1	73.3
							NMS3	69.1
F Moss	03-05-2012 13:05	UNKN						
Morman	03-06-2012 18:43	03-06-2012 18:46:53	20L	A	F2TH	EJA222	NMS1	82.9
Morman	03-06-2012 21:33	03-06-2012 21:35:37	20L	A	B350	N700PG	NMS1	82.6
Morman	03-06-2012 23:44	03-06-2012 23:48:07	20L	A	GLF4	N270SC	NMS1	83.7
Morman	03-07-2012 15:32	03-07-2012 15:35:37	20L	A	DA7X	HBJSN	NMS1	83.0
Morman	03-07-2012 15:34	03-07-2012 15:34:26	20L	A	C56X	FIV511	NMS1	81.1
Morman	03-07-2012 15:37	UNKN						
Morman	03-07-2012 15:39	UNKN						
Morman	03-07-2012 15:43	UNKN						
Morman	03-07-2012 15:46	03-07-2012 15:46:13	20L	A	CL60	N3736	NMS1	83.2
Morman	03-07-2012 15:48	03-07-2012 15:49:24	20L	A	GL5T	N700GR	NMS1	81.1
Morman	03-07-2012 15:53	03-07-2012 15:51:27	20L	A	BE40	N109NT	NMS1	81.7
Morman	03-07-2012 15:54	03-07-2012 15:53:19	20L	A	GALX	EJA716P	NMS1	81.3
Morman	03-07-2012 15:56	03-07-2012 15:57:03	20L	A	PC12	N92DZ	NMS1	86.5
Morman	03-07-2012 15:58	03-08-2012 15:59:49	20L	A	BE36	N8209A	NMS1	81.0
Morman	03-07-2012 19:31	03-07-2012 19:34:16	20L	A	CL60	N276GC	NMS1	82.8
Morman	03-07-2012 19:56	03-07-2012 20:00:22	UNK	A	PA28	N81771		
Morman	03-07-2012 20:46	03-07-2012 20:49:03	20L	A	GLF4	N883LS	NMS1	83.7
Morman	03-07-2012 20:51	03-07-2012 20:54:08	20L	A	C525	N525HX	NMS1	80.2
Morman	03-07-2012 21:10	03-07-2012 21:13:12	20L	A	H25B	N499PA	NMS1	83.1
Morman	03-07-2012 21:13	UNKN						
Morman	03-07-2012 21:14	03-07-2012 21:17:13	20R	A	BE40	N497TM	NMS1	81.3
Younger	03-07-2012 21:28	03-07-2012 21:28:35	UNK	D	C525	N525HX	NMS2	71.6
							NMS3	72.8
Cox	03-07-2012 23:33	03-07-2012 23:31:57	UNK	D	LJ25	N125JW	NMS2	84.1
							NMS3	86.3
Substel	03-07-2012 23:34	03-07-2012 23:31:57	UNK	D	LJ25	N125JW	NMS2	84.1
							NMS3	86.3
Singer	03-09-2012 00:00	03-09-2012 00:02:28	20L	D	LJ25	N125JW	NMS1	76.7
							NMS4	91.7
Silver	03-09-2012 03:00	03-09-2012 00:02:28	20L	D	LJ25	N125JW	NMS1	76.7
							NMS4	91.7
Silver	03-09-2012 08:43	03-09-2012 08:44:10	UNK	A	FA50	N425CF	NMS3	68.7

							NMS4	82.6
Nelson	03-09-2012 09:12	03-09-2012 09:13:43	02R	A	C56X	N521RA		
Nelson	03-09-2012 09:26	03-09-2012 09:27:54	UNK	A	PRM1	N276RS	NMS4	80.9
Nelson	03-09-2012 09:29	03-09-2012 09:31:31	02R	A	C560	N416BA		
Nelson	03-09-2012 09:38	03-09-2012 09:40:12	02R	A	FA7X	N906SB	NMS3	67.5
							NMS4	83.1
Silver	03-09-2012 09:39	03-09-2012 09:40:12	02R	A	FA7X	N906SB	NMS3	67.5
							NMS4	83.1
Younger	03-10-2012 03:45	03-10-2012 03:44:20	UNK	D	C560	N588CC	NMS2	75.3
							NMS3	67.7
Whitfield	03-11-2012 16:05	03-11-2012 16:03:00	UNK	D	UNKN	UNKN		
Link	03-12-2012 12:57	03-12-2012 13:00:39	20L	D	CL60	DARTE	NMS2	69.1
							NMS3	67.7
Younger	03-12-2012 19:57	03-12-2012 19:55:37	20L	D	H25B	DCM3252	NMS3	79.3
F Moss	03-12-2012 21:00	03-12-2012 21:05:42	20L	A	P180	VNR158	NMS1	86.7
Lazlo	03-12-2012 21:15	03-12-2012 21:13:37	20R	A	UNKN	UNKN	NMS1	93.0
							NMS3	70.9
Link	03-13-2012 11:53	03-13-2012 11:52:44	UNK	D	LJ25	N125JW		
Silver	03-14-2012 12:40	03-14-2012 12:39:43	20R	D	GLF3	N111FA	NMS3	85.6
Shannon	03-14-2012 16:00	03-14-2012 15:57:17	20L	D	UNKN	UNKN	NMS3	71.7
							NMS4	70.0
Shannon	03-14-2012 17:05	03-14-2012 17:06:47	UINK	D	UNKN	UNKN		
Resnick	03-18-2012 08:10	UNKN						
Smith	03-19-2012 08:19	03-19-2012 08:15:02	20L	D	GLF3	DNJ500	NMS1	70.3
							NMS3	82.5
Ziler	03-19-2012 16:30	03-19-2012 16:26:43	UNK	D	UNKN	UNKN		
Colton	03-20-2012 23:47	03-20-2012 23:46:56	20L	A	H25B	LMO9120	NMS1	84.8
Anonymous	03-21-2012 09:02	UNKN						
Anonymous	03-21-2012 09:20	UNKN						
Anonymous	03-21-2012 09:28	UNKN						
Busby	03-21-2012 19:18	UNKN						
Hines	03-22-2012 08:05	03-22-2012 08:06:36	UNK	D	COL4	N2526L	NMS3	71.6
Langford	03-22-2012 22:30	03-22-2012 22:27:58	20L	D	UNKN	UNKN		
Henson	03-24-2012 17:59	03-24-2012 17:56:22	20L	D	LJ25	XAMET	NMS1	79.4
							NMS3	93.7
							NMS2	91.1
J Moss	03-24-2012 21:39	03-24-2012 21:31:26	02R	D	LJ60	N45AN	NMS1	83.7
Carlson	03-27-2012 00:39	03-27-2012 00:33:54	UNK	A	LJ25	N81AX		
F. Moss	03-28-2012 01:15	03-28-2012 01:14:17	20L	A	LJ25	N81AX	NMS1	93.0
Hull	03-28-2012 01:30	03-28-2012 01:14:17	20L	A	LJ25	N81AX	NMS1	93.0
Hull	03-28-2012 01:50	UNKN						
Snyder	03-28-2012 12:46	03-28-2012 12:45:05	UNK	D	UNKN	UNKN		
Snyder	03-29-2012 12:32	03-29-2012 12:34:26	02L	D	UNKN	UNKN	NMS1	81.7
F. Moss	03-29-2012 14:30	03-29-2012 14:29:46	02R	D	GLF5	N557H	NMS3	76.2
							NMS1	85.8
F. Moss	03-29-2012 16:00	03-29-2012 15:59:18	02R	D	BE40	OPT438	NMS1	76.1
Snyder	03-31-2012 08:26	03-31-2012 08:27:27	UNK	A	BE40	JTL393	NMS4	70.6

Snyder	03-31-2012 12:05	03-31-2012 12:04:06	UNK	A	UNKN	UNKN		
J.Moss	03-31-2012 18:24	03-31-2012 18:24:02	UNK	D	GLF3	N155MM		
Marshall	03-31-2012 18:24	03-31-2012 18:24:02	UNK	D	GLF3	N155MM		
J. Moss	03-31-2012 22:00	03-31-2012 22:02:03	20L	A	GLF4	N505GF		

 = Complaint + high noise event,  = Complaint + curfew operation

 = Complaint + high noise + curfew operation

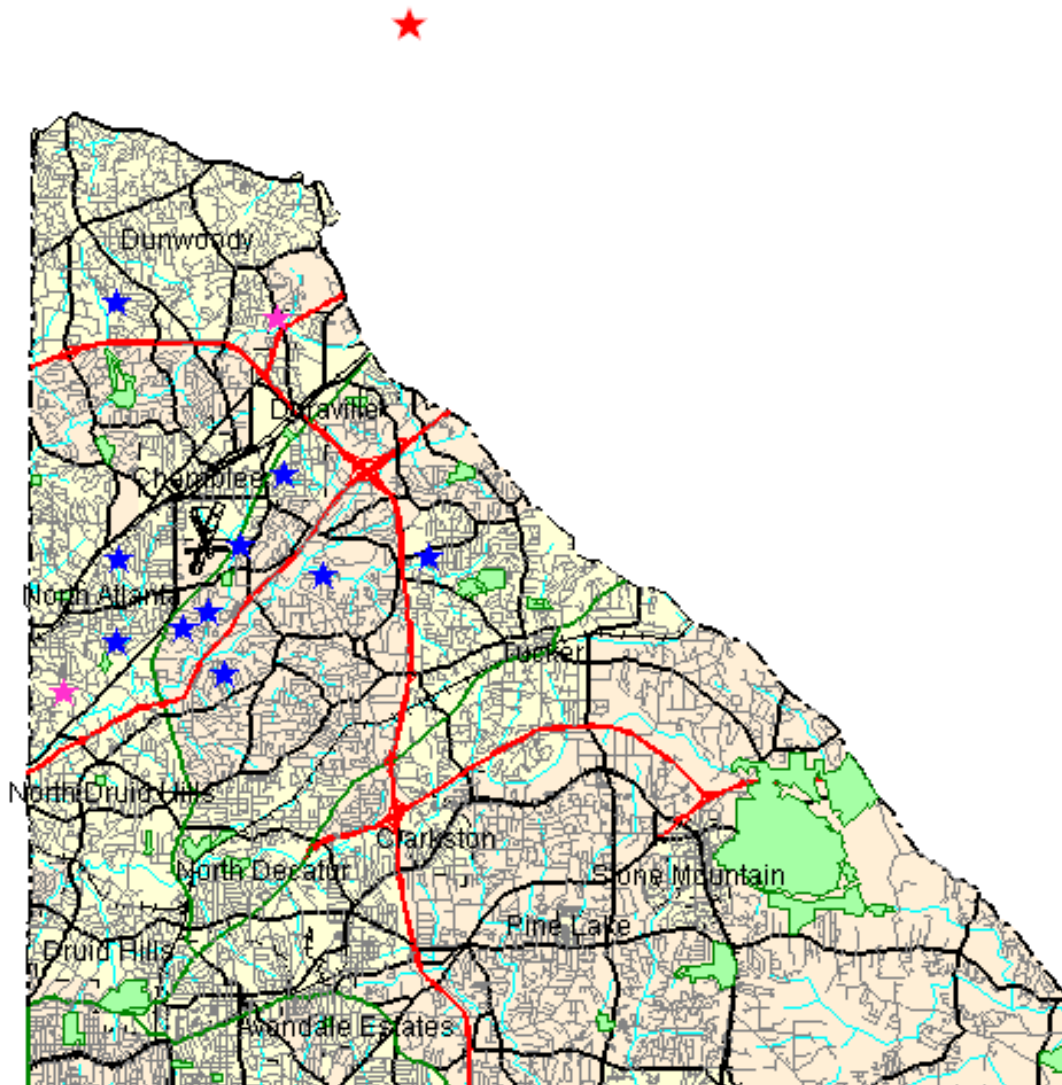
The airport correlated **67 (88%)** of the noise complaints with aircraft operations from PDK to be **direct** correlations. Of the **76** noise complaints, **0 (0%)** were **indirect** correlation to operations and **9 (12%)** were **not correlated**.

**Direct** = *Linked to a specific flight operation over a house/monitor (NOMS correlation).*

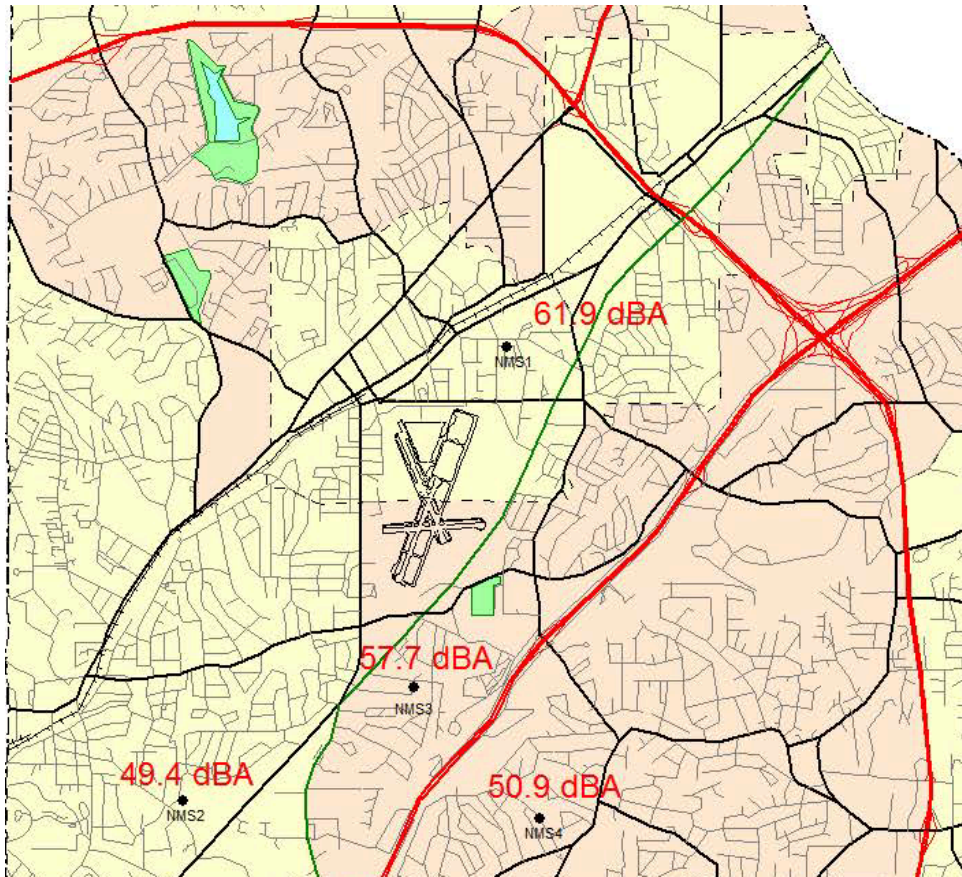
**Indirect** = *Not linked to a specific flight operation (take-off thrust, reverse thrust; correlated by staff).*

**Not Correlated** = *Cannot tie to NOMS or manual research.*

## Disturbance Location Pin Map



## Monthly Noise Levels at Monitors



## Noise Terminology

- *Decibels (dB) are the unit of measurement on the loudness scale. Decibels that a human can hear are called “A-weighted” or “dBA” on the sound frequency scale.*
- *The decibel scale is logarithmic, not linear. The smallest detectable change 1 dB; 3 dB for a human is readily detectable; 10 dB seems twice as loud.*
- *L<sub>max</sub> – The maximum A-weighted sound level for a given event – the highest level registered on the scale or meter; is not related to the duration for the event.*
- *DNL – A 24-hour time-averaged sound exposure level. It is the noise metric of choice in aircraft sound level measurement. It is also used to define noise contours of equal exposure. All Federal agencies have adopted DNL (LDNA) as the metric for airport noise analysis. (Day Night Level) (Day Night Level A-weighted)*
- *Leq – The steady A-weighted sound level over any specified period. It is used to identify the average sound level over a given period of time.*

# Letters

## Voluntary Curfew Operations & Operators

### Operations:

The airport identified a total 314 of the 350 operations during the voluntary curfew period (11PM-6AM) during the month of March, 2012. 164 of these 350 operations were identified as MEDEVAC and/or emergency flights.

90 "one time" operations were conducted during this period.

260 were multi-time operations conducted during this period, i.e. an operator conducting 2 or more operations during this period.

### Operators Identified / Multi-Use:

138 operators were identified using the airport during the voluntary curfew period.

48 operators were identified using the airport during the voluntary curfew period for 2 or more times during the month.

18 operators were identified as MEDEVAC and/or emergency flights.

### Complaints received from operations conducted during the voluntary curfew period:

76 complaints were received during March, 2012.

12 complaints were received for operations conducted during the voluntary curfew period.

### **This Month (N #'s)**

27 Aircraft with 2 operations (54500, 78991, 125JW, 142CW, 560HX, 5MQ, 608MM, **68DA**, 705AC, 74AX, 779XJ, 209EA, 31NW, **2BA**, 376QS, 335H, 338PC, **42HN**, **442GJ**, **444WB**, 531P, 5355F, **55FN**, 905LC, 921CS, 926RM, 412GJ)

4 Aircraft with 3 Operations ( 126DS, 2334L, 423TJ, **4083Y** )

6 Aircraft with 4 Operations ( 7877D, **202TC**, **24GJ**, **283KA**, 3101T, **81AX** )

1 Aircraft with 5 Operations ( 615HB )

1 Aircraft with 6 Operations ( **3589X** )

1 Aircraft with 7 Operations ( **40PK** )

1 Aircraft with 11 Operations ( 270SC )

2 Aircraft with 12 Operations ( **101TT**, 377P )

1 Aircraft with 13 Operations ( **350PC** )

1 Aircraft with 23 Operations ( **333VS** )

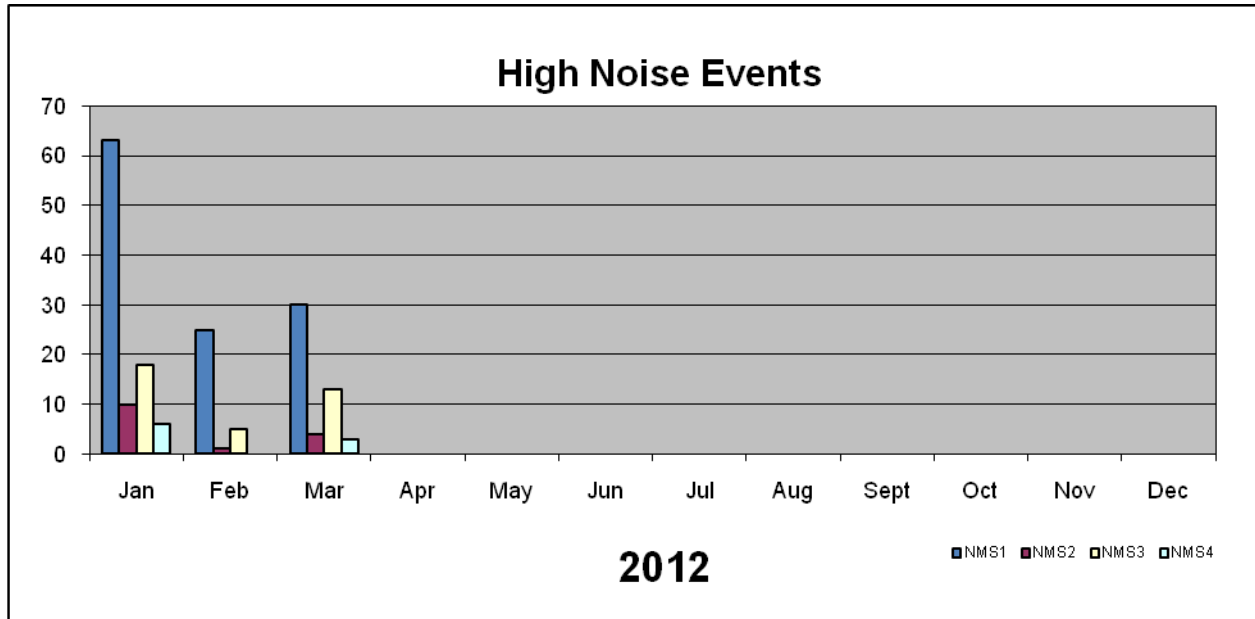
1 Aircraft with 25 Operations ( **208LS** )

1 Aircraft with 45 Operations ( **9514F** )

**\*Note: The bold face N#'s represent MEDEVAC, Medical related flights, or Law Enforcement.**

## High Noise Event Threshold

The high noise event threshold was developed to work with pilots in methods and techniques that could reduce aircraft noise levels in and around PDK and its residential areas. Noise Monitoring Station (NMS) 1 is located in a commercial district and is set at **93 dBA Lmax** or greater. All other monitors, NMS2, 3, & 4 are located in residential areas and are set at **90 dBA Lmax** or greater. A total of **27** advisory letters were sent this month for aircraft identified as exceeding PDK's high noise event threshold.



### **February (N #'s)**

9 Aircraft with 1 High Noise Events ( 945SK, 175QS, 400DW, 900JB, 111FA, 813LS, 412PG, 818BL, 330WR )

3 Aircraft with 2 High Noise Events ( 30WR, 65RA, 773RC )

1 Aircraft with 9 High Noise Events ( 125JW )

### **March (N #'s)**

22 Aircraft with 1 High Noise Events ( 615HB, 1UP, 200SG, 900JB, 227LA, 850CT, 48KR, 905LC, 330WR, 87BC, 65RA, 800EM, 23WJ, 412GJ, **81AX**, 832CB, 773RC, 16AJ, 37RZ, 305SC, 523AM, 672PP )

5 Aircraft with 2 High Noise Events ( 773RC, 500TH, 511TL, **333VS**, 125JW )

## Comments

Please visit [www.pdkairport.org](http://www.pdkairport.org) for all your airport information or you may contact the airport about noise concerns at [pdknoise@co.dekalb.ga.us](mailto:pdknoise@co.dekalb.ga.us) . Also follow us on Facebook at

<http://www.facebook.com/pages/PDK-DeKalb-Peachtree-Airport/205886864195>