



Monthly Report

DeKalb Peachtree Airport Noise Information Office

January 2012

Prepared By:

John D. Carroll

Airport Noise & Environmental Technician

Date:

2/09/2012

Introduction

The DeKalb-Peachtree Airport is located in a highly aircraft noise sensitive area surrounded by residential communities. The primary goal of the Good Neighbor Program is a community-based program aimed directly at the reduction of aircraft noise levels in the vicinity of the airport. The Good Neighbor Program is a multi-faceted program that uses many approaches toward the same goal.

PDK's Good Neighbor Program strives to reduce overall aircraft noise disturbances, by soliciting airport user involvement in reaching and maintaining this goal. Participation, knowledge, and cooperation are the keys to its success.

This report is a summary of airport operations, noise disturbances, follow-up letters, and overall comments for the month. For more information on PDK's Good Neighbor Program, contact the Noise Information Office at (770) 936-5442 or visit the airport's web-site at 'www.pdkairport.org'.

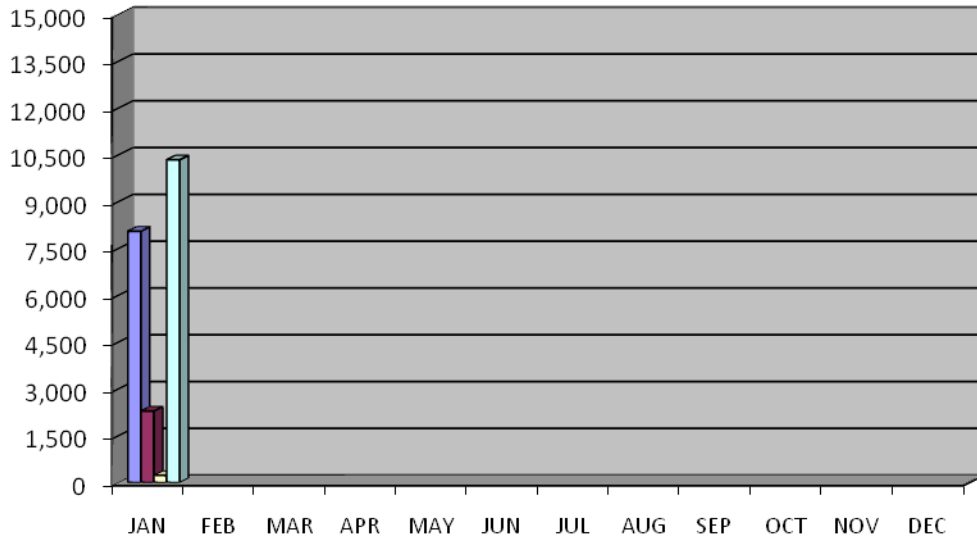
Aircraft Operations Summary

	This Month	This Month Last Year	5 Year Average for Month
Total Operations	10,344	10,209	11,819
Itinerant	8,054	8,010	9,015
Local	2,290	2,199	2,804
Voluntary Curfew Ops	226	201	224
Prior Authorization (75,000 Pounds)	46	0 noise disturbance call associated with these flights. 1 voluntary curfew ops were associated with these flights.	

Definitions:

Prior Authorization (Section 6-93 County Code)	Aircraft certified by the FAA with a max gross take-off weight greater than 75,000 pounds
Operation	One take-off or landing. Touch-and-go counts as two operations
Itinerant	Non touch-and-go operations
Local	Operations within 20 miles of Airport
Voluntary Curfew Ops	Operations that occur during the hours of 11:00 p.m. and 6:00 a.m.

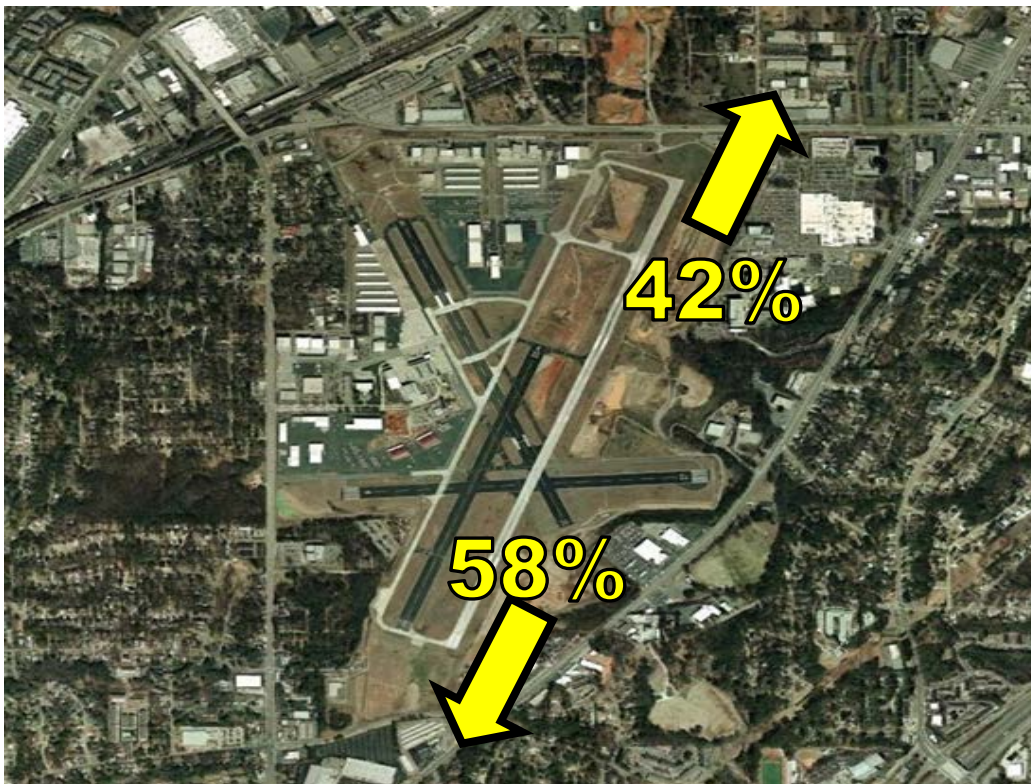
2012 Aircraft Operations Summary - By Type



	JAN	FEB	MAR	APR	MAY	JUN	JUL	AUG	SEP	OCT	NOV	DEC
Itinerant	8,054											
Local	2,290											
Voluntary Curfew	226											
Total Operations	10,344											

Runway Mode of Operations

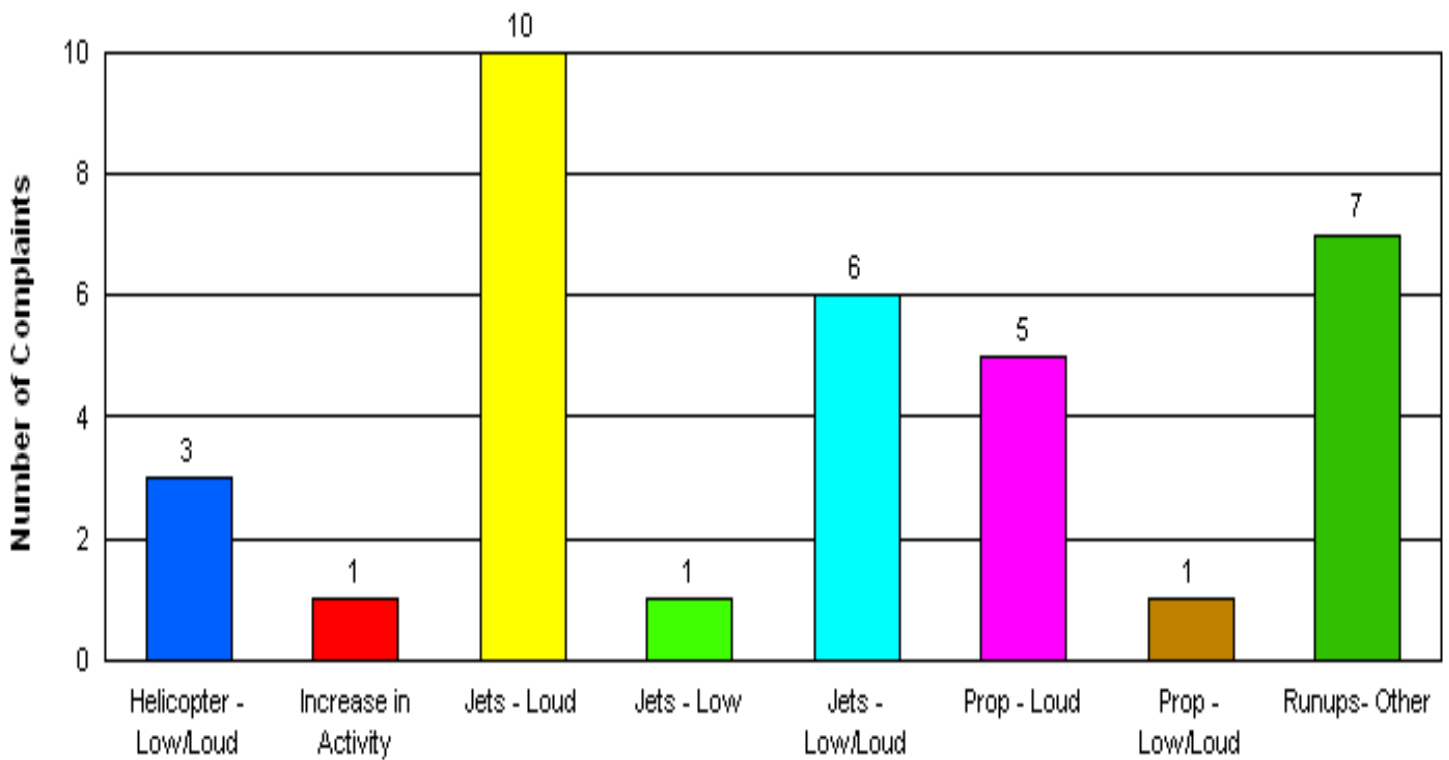
Directional use of runways has a major effect on flight patterns and the areas affected by these flight operations. Weather and wind direction generally determines runway selection. When the tower is open the FAA Air Traffic Control Tower determines directional use of runways.



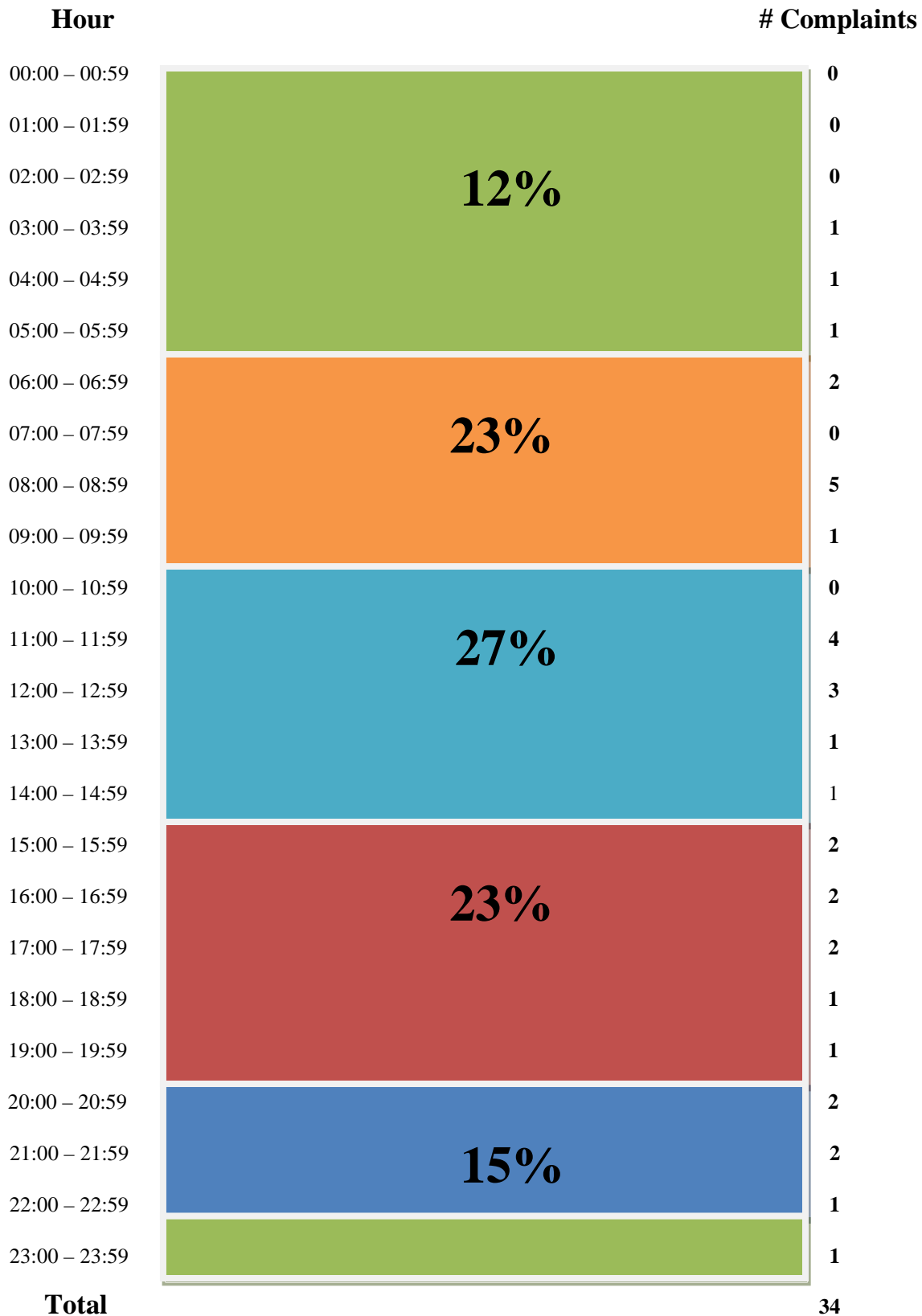
Noise Disturbances Reported

PDK maintains a hotline that permits residents to report unusually loud aircraft over-flights. (770) 936-5442

Total complaints for the month	Monthly Complaint Average 2012	Reports per Household <i>(minus top two/Households)</i>	Reports per Household <i>All Inclusive</i>
34	34	1.3	1.6



Complaints by Hour



Complainants

Marshall	2559 Woodacres Road, Atlanta 30345	2
Feldman	2376 Arrow Circle, Atlanta 30341	1
Powell	2841 Arrow Ck Dr, Chamblee 30341	1
Memic	1472 Stratfield Circle, Atlanta 30319	1
Blackmon	2027 Clairmont Ter., Atlanta 30345	1
F Moss	2538 Chestnut Landing, Atlanta 30360	3
Huges	5139 Peachtree Road, Chamblee 30341	1
J Moss	2538 Chestnut Landing, Atlanta 30360	2
Gallo	3475 Waddeston Way, Atlanta 30319	1
Smith	2459 Fair Oaks Rd, Decatur 30033	1
Putterman	1146 Fuller Rd, Atlanta 30319	1
Brethour	1978 N Ridgeway Rd NE, Atlanta 30345	3
Anderson	2188 Clairmont Terrace, Atlanta 30345	1
Kareletiz	2819 Frontier Trail, Atlanta 30341	1
Shere	4015 North Stradford Road, Atlanta 30342	1
Whitfield	2993 Villa Esta Dr., Chamblee 30341	1
Carlson	2692 Frontier Trail, Atlanta 30341	1
Cope	3521 Hilldon Circle, Chamblee 30341	1
Zeller	1830 Tobey Road, Atlanta 30341	1
Ziler	1830 Tobey Road, Atlanta 30341	4
Silver	2108 Meadowcliff Drive	1
Younger	2030 Lenox Cove Cir. NE, Atlanta 30319	4


Number of Complaints: 34

Number of Complainants: 22

Correlation of noise complaints to operations (NOMS)

Name	Offense Start	Flight Time	Rwy	Op	Equip	Flight ID	NMS	Lmax
Younger	01-01-2012 05:39	01-01-2012 05:36:51	UNK	O	UNK	CHLDRN1		
Brethour	01-01-2012 14:09	01-01-2012 14:08:29	20R	D	FA50	TWY988	NMS3	80.4
							NMS4	68.1
Younger	01-01-2012 16:33	01-01-2012 16:35:55	20R	D	UNKN	UNKN	NMS2	70.6
Blackmon	01-02-2012 17:45	01-02-2012 17:45:14	02L	A	C525	N608MM		
Marshall	01-02-2012 18:40	01-02-2012 18:39:04	02R	A	C525	N525HX		
Marshall	01-02-2012 22:56	01-02-2012 22:56:46	02L	D	GLF4	N188DX	NMS1	77.7
							NMS3	74.0
Putterman	01-09-2012 19:35	01-09-2012 19:34:55	20L	D	C206	N4791U	NMS3	72.8
Anderson	01-10-2012 08:54	01-10-2012 08:51:25	UNK	D	LJ25	N125JW	NMS3	96.8
							NMS4	78.3
Carlson	01-10-2012 09:01	01-10-2012 09:00:10	UNK	D	LJ45	N16PC	NMS3	75.0
Feldman	01-10-2012 12:47	01-10-2012 12:43:46	20L	A	LJ45	N445SE	NMS1	80.4
Powell	01-10-2012 12:50	UNKN						
Whitfield	01-10-2012 13:08	UNKN						
Younger	01-10-2012 20:58	01-10-2012 20:57:37	20L	D	FA20	N632KA	NMS3	79.8
							NMS4	69.4
							NMS2	71.9
Zeller	01-13-2012 12:30	01-13-2012 12:33:32	27	D	HXB	N123CX		
Younger	01-15-2012 04:26	01-15-2012 04:24:29	UNK	O	UNKN	UNKN		
Gallo	01-16-2012 08:25	UNKN						
Memic	01-16-2012 08:30	UNKN						
Huges	01-16-2012 08:30	UNKN						
Cope	01-16-2012 08:35	UNKN						
Kareletiz	01-16-2012 15:25	UNKN						
J Moss	01-20-2012 06:30	01-20-2012 06:28:31	02R	D	LJ25	N125JW	NMS1	95.3
F Moss	01-20-2012 06:30	01-20-2012 06:28:31	02R	D	LJ25	N125JW	NMS1	95.3
F Moss	01-20-2012 11:45	01-20-2012 11:47:07	20L	A	LJ25	N125JW	NMS1	95.6
F Moss	01-20-2012 11:46	UNKN						
J Moss	01-20-2012 23:02	01-20-2012 23:03:59	UNK	A	LJ25	N125JW		
Shere	01-24-2012 11:00	UNKN						
Ziler	01-25-2012 03:00	01-25-2012 02:57:53	UNK	D	C208	USC392		
Ziler	01-25-2012 16:27	01-25-2012 16:26:24	02R	A	UNK	CHLDRN1	NMS2	72.6
Brethour	01-25-2012 17:25	01-25-2012 17:22:36	02R	A	GLF4	N37WH	NMS3	67.4
Smith	01-25-2012 20:58	01-25-2012 21:00:08	02R	A	LJ25	N125JW		
Brethour	01-25-2012 21:04	01-25-2012 21:00:08	02R	A	LJ25	N125JW		
Ziler	01-25-2012 21:15	01-25-2012 21:14:56	UNK	A	UNKN	UNKN		
Silver	01-26-2012 11:03	01-26-2012 11:02:33	20R	D	LJ25	N125JW	NMS1	79.8
							NMS3	90.2
							NMS4	85.6
Ziler	01-29-2012 15:00	UNKN						

 = Complaint + high noise event,  = Complaint + curfew operation

 = Complaint + high noise + curfew operation

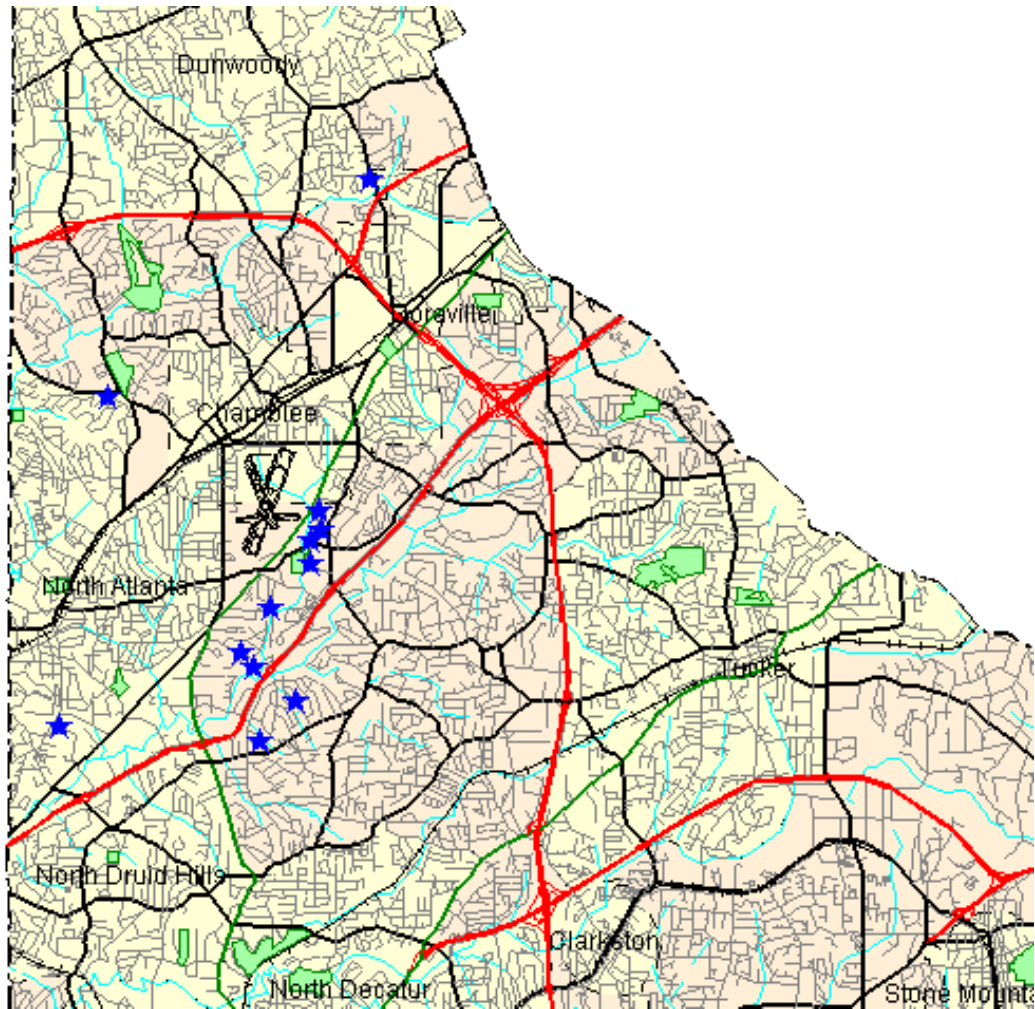
The airport correlated 23 (67%) of the noise complaints with aircraft operations from PDK to be **direct** correlations. Of the 34 noise complaints, 8 (24%) were **indirect** correlation to operations and 3 (9%) were **not correlated**.

Direct = *Linked to a specific flight operation over a house/monitor (NOMS correlation).*

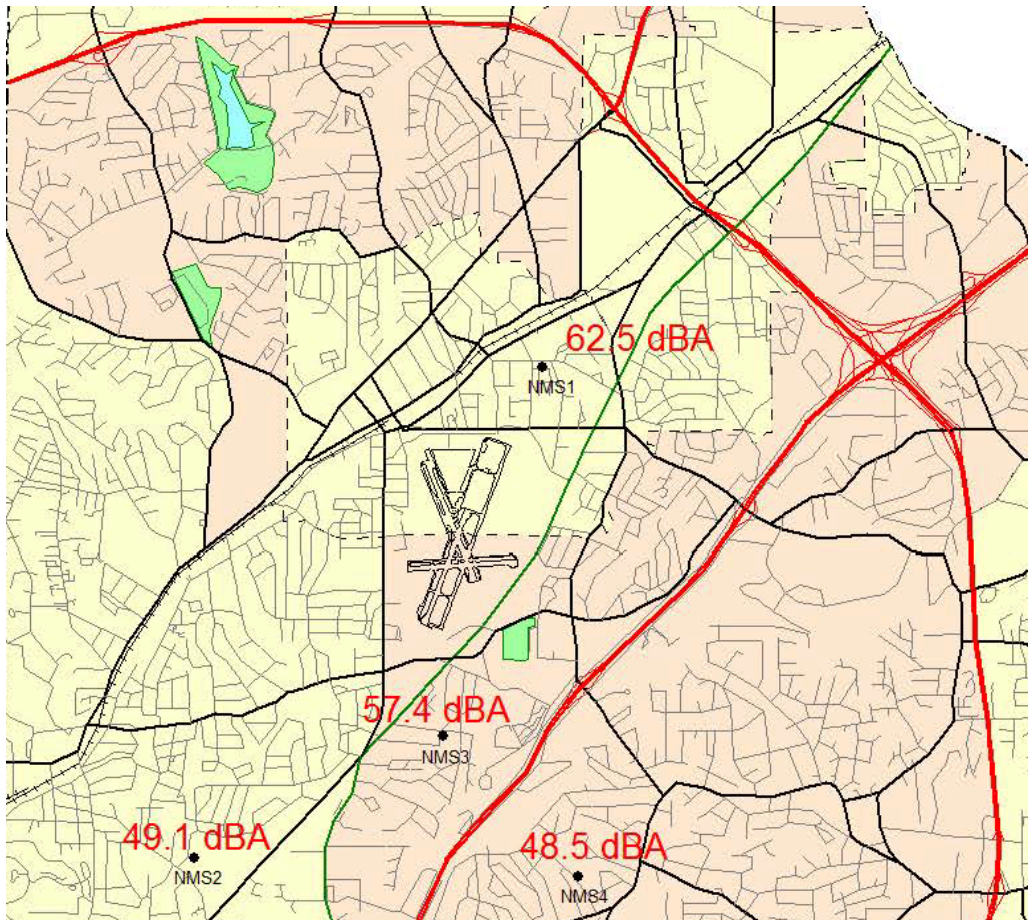
Indirect = *Not linked to a specific flight operation (take-off thrust, reverse thrust; correlated by staff).*

Not Correlated = *Cannot tie to NOMS or manual research.*

Disturbance Location Pin Map



Monthly Noise Levels at Monitors



Noise Terminology

- *Decibels (dB) are the unit of measurement on the loudness scale. Decibels that a human can hear are called “A-weighted” or “dBA” on the sound frequency scale.*
- *The decibel scale is logarithmic, not linear. The smallest detectable change 1 dB; 3 dB for a human is readily detectable; 10 dB seems twice as loud.*
- *Lmax – The maximum A-weighted sound level for a given event – the highest level registered on the scale or meter; is not related to the duration for the event.*
- *DNL – A 24-hour time-averaged sound exposure level. It is the noise metric of choice in aircraft sound level measurement. It is also used to define noise contours of equal exposure. All Federal agencies have adopted DNL (LDNA) as the metric for airport noise analysis. (Day Night Level) (Day Night Level A-weighted)*
- *Leq – The steady A-weighted sound level over any specified period. It is used to identify the average sound level over a given period of time.*

Letters

Voluntary Curfew Operations & Operators

Operations:

The airport identified a total 221 of the 226 operations during the voluntary curfew period (11PM-6AM) during the month of January, 2012. 102 of these 226 operations were identified as MEDEVAC and/or emergency flights.

68 “one time” operations were conducted during this period.

158 were multi-time operations conducted during this period, i.e. an operator conducting 2 or more operations during this period.

Operators Identified / Multi-Use:

101 operators were identified using the airport during the voluntary curfew period.

33 operators were identified using the airport during the voluntary curfew period for 2 or more times during the month.

12 operators were identified as MEDEVAC and/or emergency flights.

Complaints received from operations conducted during the voluntary curfew period:

34 complaints were received during January, 2012.

4 complaints were received for operations conducted during the voluntary curfew period.

This Month (N #'s)

20 Aircraft with 2 operations (200EA, **202TC**, 21NV, 955HE, 982AR, 310ME, 337FX, 351TV, 401SM, **40PK**, 428JD, 4455M, 500TH, 517CC, 615HB, 627QS, 691ES, 718JP, 882WF, 910DP)

2 Aircraft with 3 Operations (225JH, 401BL)

2 Aircraft with 4 Operations (**117CH**, **891AA**)

3 Aircraft with 6 Operations (**105AN**, **31NW**, **3589X**)

1 Aircraft with 8 Operations (**9539F**)

1 Aircraft with 10 Operations (**208LS**)

1 Aircraft with 12 Operations (**4083Y**)

1 Aircraft with 14 Operations (**333VS**)

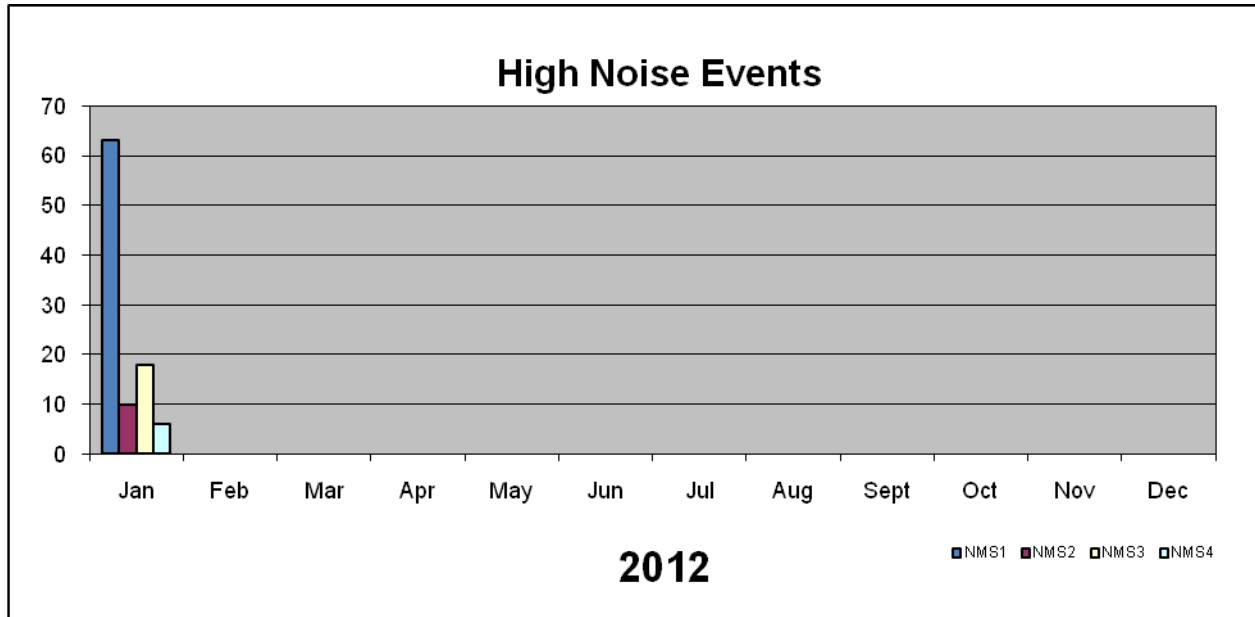
1 Aircraft with 16 Operations (**350PC**)

1 Aircraft with 26 Operations (**9514F**)

***Note: The bold face N#'s represent MEDEVAC, Medical related flights, or Law Enforcement.**

High Noise Event Threshold

The high noise event threshold was developed to work with pilots in methods and techniques that could reduce aircraft noise levels in and around PDK and its residential areas. Noise Monitoring Station (NMS) 1 is located in a commercial district and is set at **93 dBA Lmax** or greater. All other monitors, NMS2, 3, & 4 are located in residential areas and are set at **90 dBA Lmax** or greater. A total of **23** advisory letters were sent this month for aircraft identified as exceeding PDK's high noise event threshold.



December (N #'s)

23 Aircraft with 1 High Noise Events (428JD, 1UP, **81AX**, 711VL, 88CA, 210CM, 44ZF, 96757, 901EH, 5GF, 92SH, 8911V, 865AM, 900JB, 155MM, 546XJ, 188CB, 4594F, 3192W, 200EA, 261JP, 4114P, 15MD)

5 Aircraft with 2 High Noise Events (825MK, 900JB, 523AM, 65RA, 227LA)

1 Aircraft with 3 High Noise Events (125JW)

January (N #'s)

17 Aircraft with 1 High Noise Events (901EH, 623MS, 776MA, 428JD, 615HB, 134EC, 456TM, 769CP, 295AF, 294RT, 91LS, 438SR, 527JA, 358CC, 393BB, 5GF, 702DS)

4 Aircraft with 2 High Noise Events (330WR, 15ER, 492JT, 30WR)

1 Aircraft with 3 High Noise Events (773RC)

1 Aircraft with 13 High Noise Events (125JW)

Comments

Please visit www.pdkairport.org for all your airport information or you may contact the airport about noise concerns at pdknoise@co.dekalb.ga.us . Also follow us on Facebook at

<http://www.facebook.com/pages/PDK-DeKalb-Peachtree-Airport/205886864195>